

# DSS SCREEN FOUR

ITALIAN HI-TECH LARGE DISPLAY

Owner's Manual

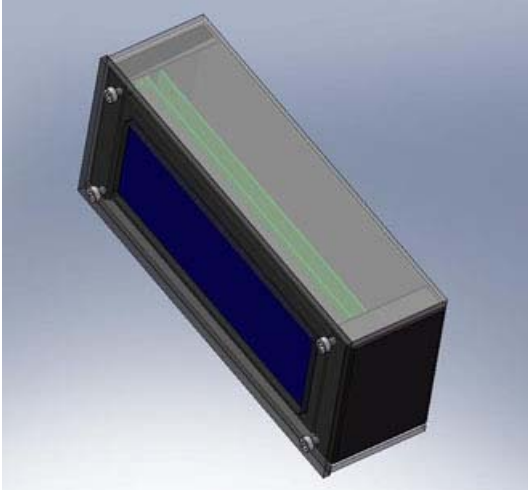
# Table Of Contents

- Congratulations & Introduction	3
- Contents of Packaging	4
- Back Panel Features	4
- Operating Conditions	5
- Play Mode	6
- Repeat Mode	7
- Volume Control	8
- Warranty, Customer Service, Warnings & F.A.Q.	9

## ***Congratulations***

Thank you for having purchased a Blacknote® product.

### ***Introduction***



**The DSS Screen Four is a large external display can be hooked to all DSS with the RS232 port.**

The DSF is very easy to install just hooking the supplied RS 232 computer cable to the DSS rear panel connector. The DSF automatically starts working allowing a large convenient view even from long distance of all the main functions and content of the music played by the DSS. The DSF simplicity and its the big size enable deep DSS exploiting even for not computer oriented users with the same *three touch* Play facility of the DSS.

Also the long wired connectivity allow to position the DSF in the most convenient place in order to complete the user friendly design.

**PLEASE NOTE: All the DSS15 units can't hook the DSF (DSS Screen Four) because they do not have the RS 232 port.**

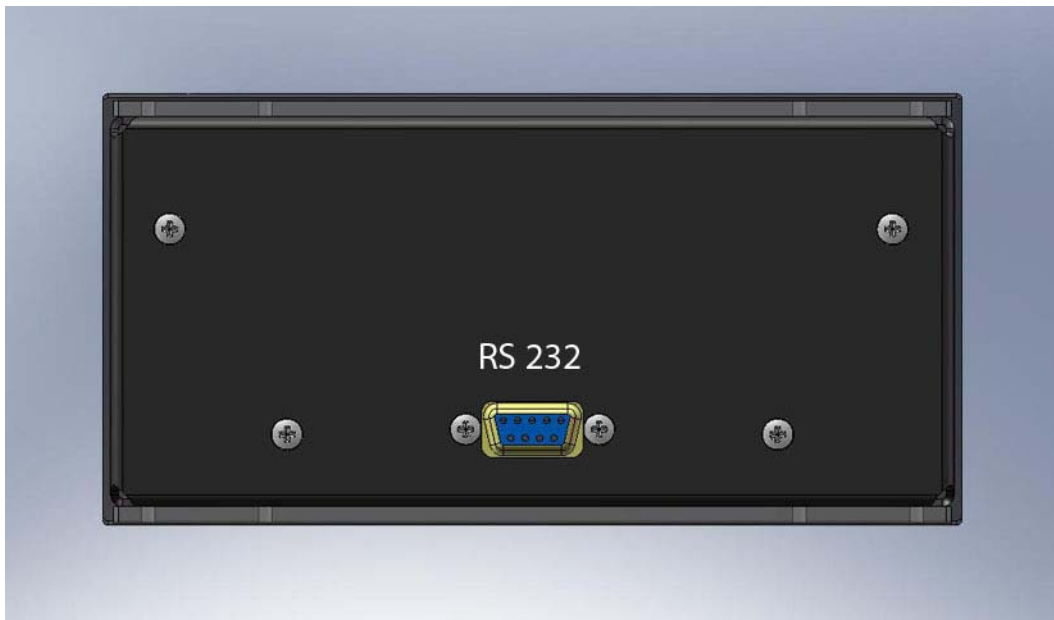
## (Contents of Packaging)

- 1pc. DSS SCREEN FOUR
- 1pc. DETACHABLE SERIAL CABLE (RS 232 connection)
- INSTRUCTIONS AND WARRANTY CERTIFICATE.

## (Set-Up Instructions)

This section describes how to assemble and install your DSS SCREEN FOUR Large Display. The instructions are purely descriptive and necessarily generic. If you have any doubts or difficulties please contact the local Blacknote® dealer.

- Open all the cartons inside the main box and look that all the components listed are present.
- Carefully remove the DSS SCREEN FOUR Large Display chassis from the shipping box and foam.



**DSS SCREEN FOUR back panel**

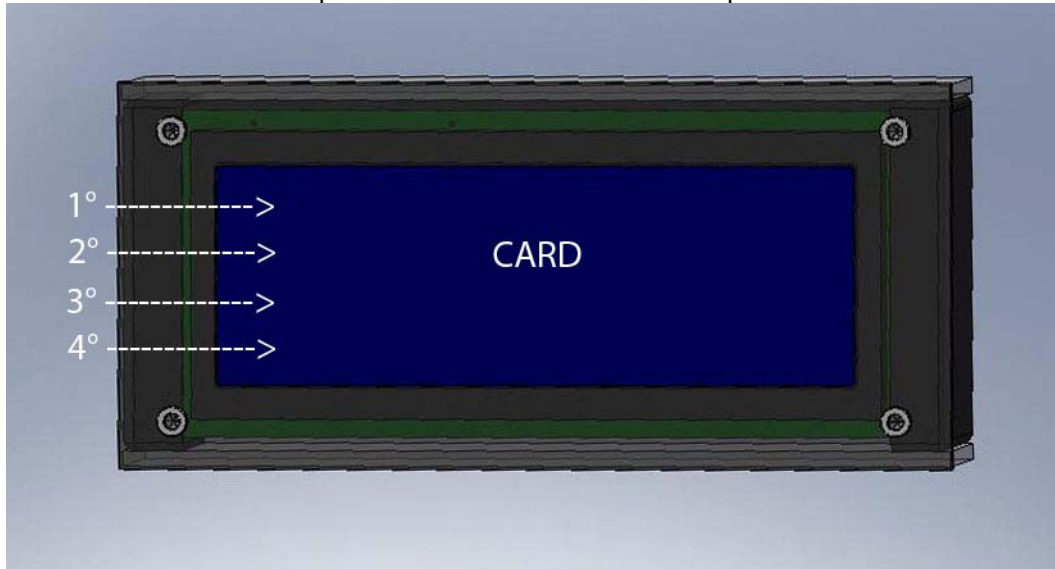
- **RS 232** Connector to hook to the DSS unit

The unit simply need to be hooked to the RS232 DSS unit available on the rear panel as well. Once the DSF is hooked it will display the information automatically and simultaneously with the small display set up on the DSS as well.

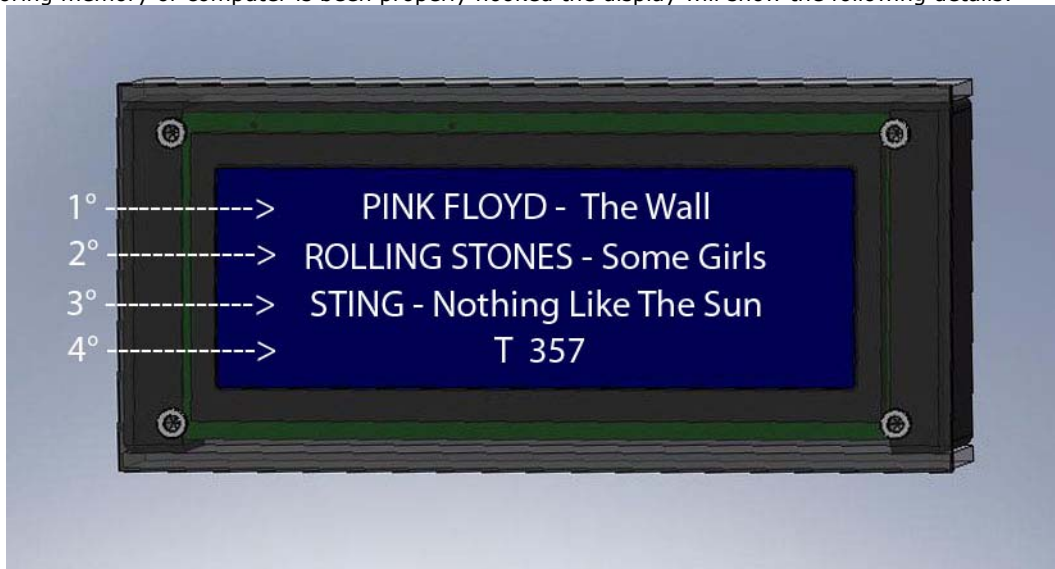
The versatility and the long cable of the DSF supplied allow to position it in the most convenient place.

## (Operating Conditions)

Once the DSS is been turned off and boot the software just after it shows the CPU software version on the screen like **DSS Ver. 3.12**. The first option of the main menu will show up on the screen as here below:



Once one storing memory or computer is been properly hooked the display will show the following details:



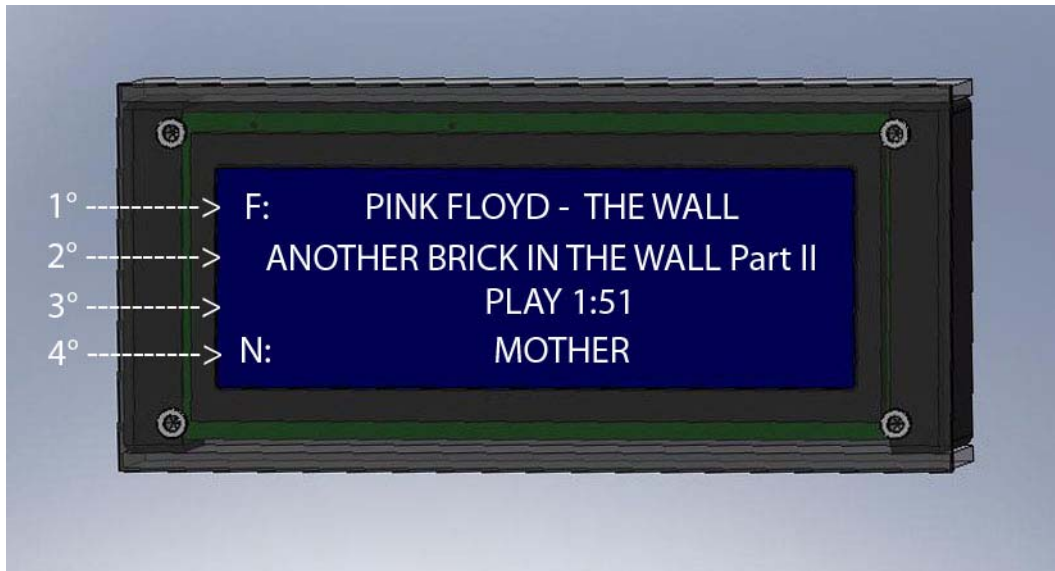
**DSS SCREEN FOUR No-Play-Mode**

The DSS SCREEN FOUR Large display in NO-PLAY-MODE shows the first four Main Folders/Sub Folders/Tracks one per each line.

- **1° LINE** - Shows the Folder/Track ready to being played - It is the one to get into/play pressing PPE on the DSS.
- **2° & 3° LINE** - Show the following Folder/Tracks in order of appearance.
- **4° LINE** - shows the Folder/track position number

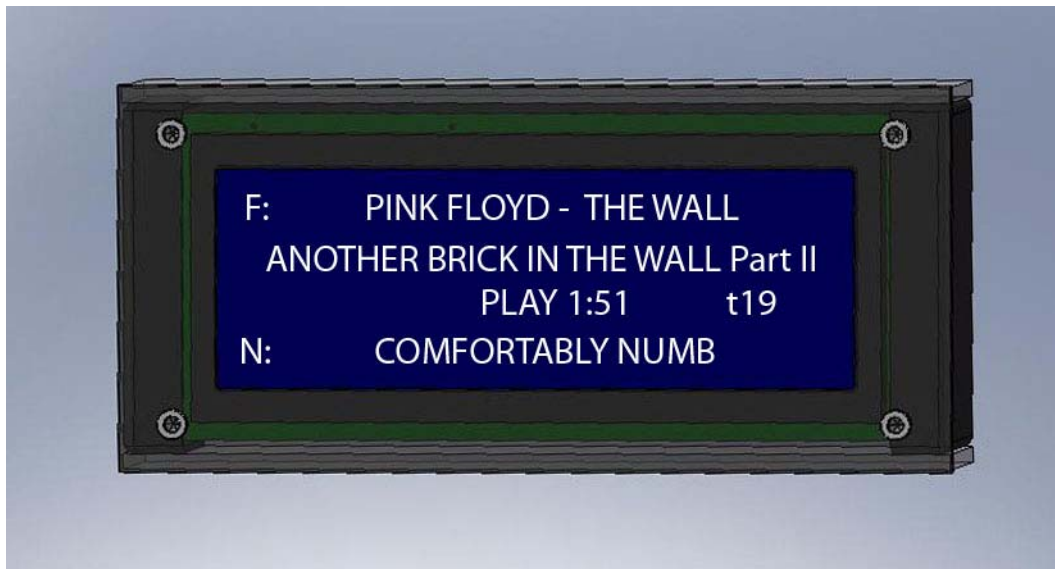
**(PLAY MODE)**

Once one folder is selected the display will show the first tracks for which we can start the Play mode:



**DSS SCREEN FOUR Play Mode**

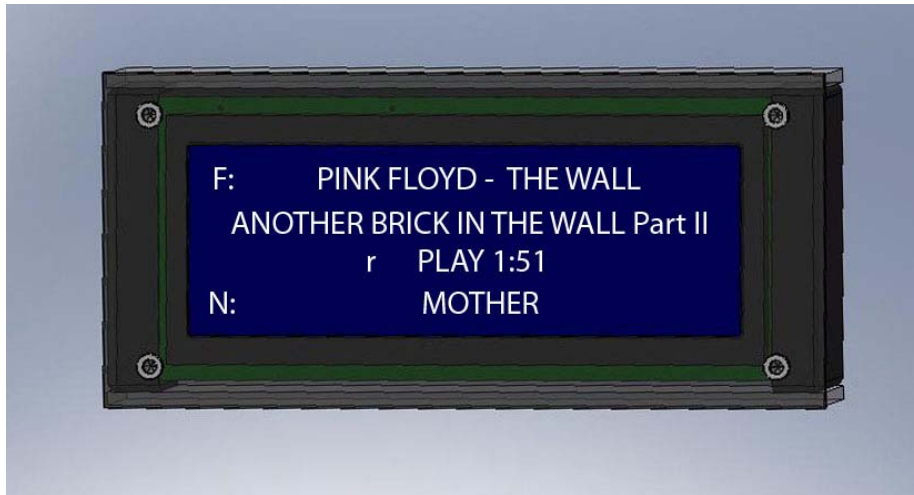
- **1° LINE** - Shows the Folder name of the track played – F: identify simply the Folder.
- **2° LINE** - Shows the played track name – If the track is longer than 20 letters it loops and stop around. To let it loop and read fully again it is enough press DISP on the DSS remote.
- **3° LINE** - Shows the time and service details – It shows the played time, the Repeat modes and the track number selected as well.
- **4° LINE** - Shows the following track name – It shows the following NEXT track of the one played. It also shows the track name browsing up and down or recalling dialing the track number.



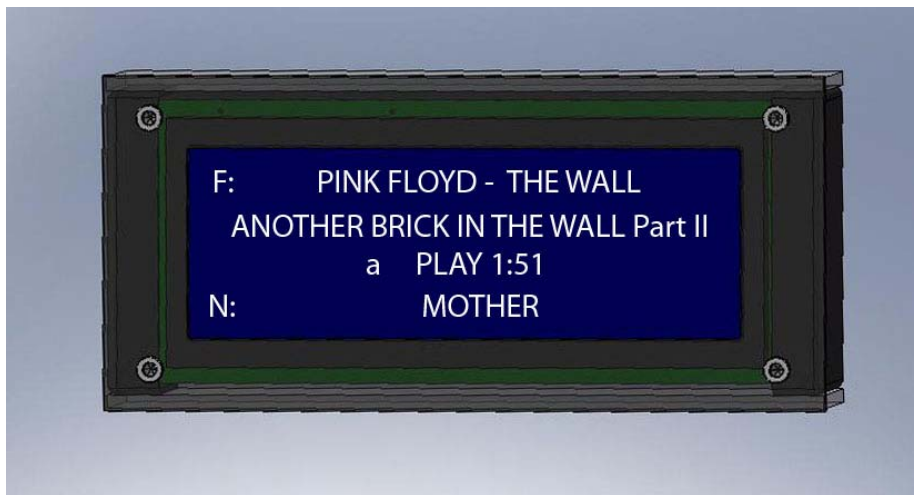
**DSS SCREEN FOUR Showing the Track 19 as t19 on 3° line and name on 4° line**

### (REPEAT MODE)

With the RPT (Repeat) key on the DSS remote is possible to select the three different available repeat modes: **Repeat One Track – Repeat All – Shuffle**



DSS SCREEN FOUR - Repeat ONE track - 4° line shows the next track playing



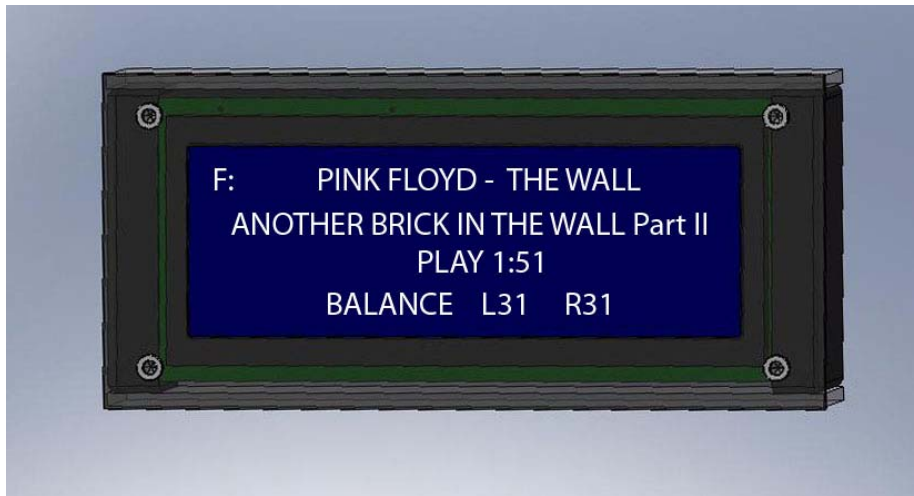
DSS SCREEN FOUR - Repeat ALL folder - 4° line shows the next track playing



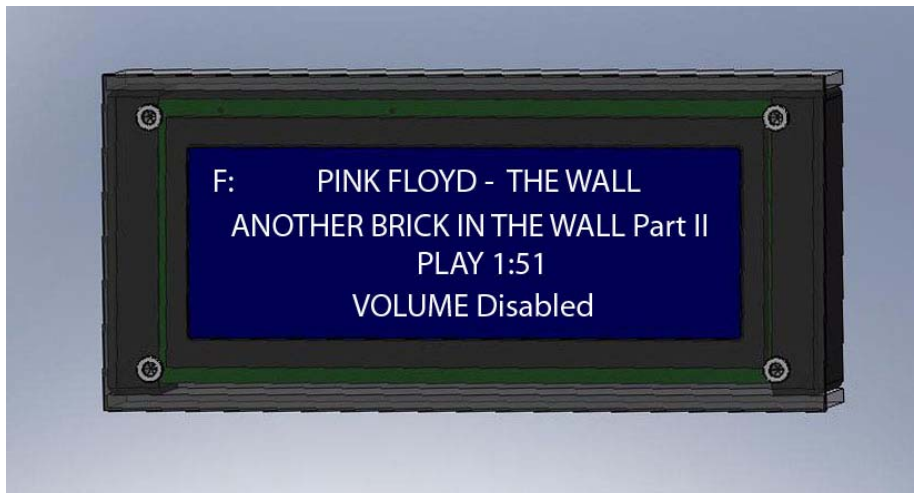
DSS SCREEN FOUR - SHUFFLE - 4° line shows the next track will be played random

### (VOLUME CONTROL)

The volume & Balance can be controlled thru the DSS remote and will show on the DSF 4° line:



The volume can be disabled using the P1 key on the remote also. First pressing will set set up all the max balanced level of the DSS, second pressing will disabled the volume as follow:



### (Warranty Certificate)

The warranty certificate is enclosed separately and to be valid must be completed fill and returned to Blacknote factory or the official distribution. In all countries where there is an official distribution network, the dealer must stamp the warranty certificate. In compliance with the laws in force, the dealer may modify the official Blacknote warranty certificate wholly or partially without notice and without further mention being made in this instruction manual.

Due to the particular kind of item the warranty does not cover the Tubes at all in case they are used

### (Customer Service)

All BLACKNOTE® products are the result of meticulous technological research, and consequently their correct functioning is guaranteed. In spite of this it is possible that problems may emerge which non-specialist users cannot resolve. In this case, contact your dealer who will advise you on how to resolve the problem.

Do not return any object directly to the factory or to the national distributor or without being authorized to do so. In such cases both BLACKNOTE® and the distribution agents operating within your territory decline responsibility of any kind.

**Please Note: Descriptions and technical characteristics may vary in any moment without notice.**

### Warnings

1. Do not disassemble any part of the product.
2. Do not use any part of the product for other purposes.
3. For service and problems of any kind, contact qualified Blacknote personnel.
4. Protect the product from rain and humidity and keep away from heat sources, electric and electronic motors etc.
5. The power Chord supplied must be used only on this unit.
6. Blacknote does not have responsibility for any improper use of this unit

### (F.A.Q.)

QUESTION	DESCRIPTION	REASON/SOLUTION
Why the DSF can't be hooked to the DSS15	<ul style="list-style-type: none"> <li>• <i>The DSF works on the RS 232 port only the DSS15 does not handle that port as default.</i></li> </ul>	Please contact your local Blacknote® dealer or the company Customer Service at <a href="mailto:service@blacknote.eu">service@blacknote.eu</a>
	<ul style="list-style-type: none"> <li>•</li> </ul>	<ul style="list-style-type: none"> <li>•</li> </ul>
	<ul style="list-style-type: none"> <li>•</li> </ul>	